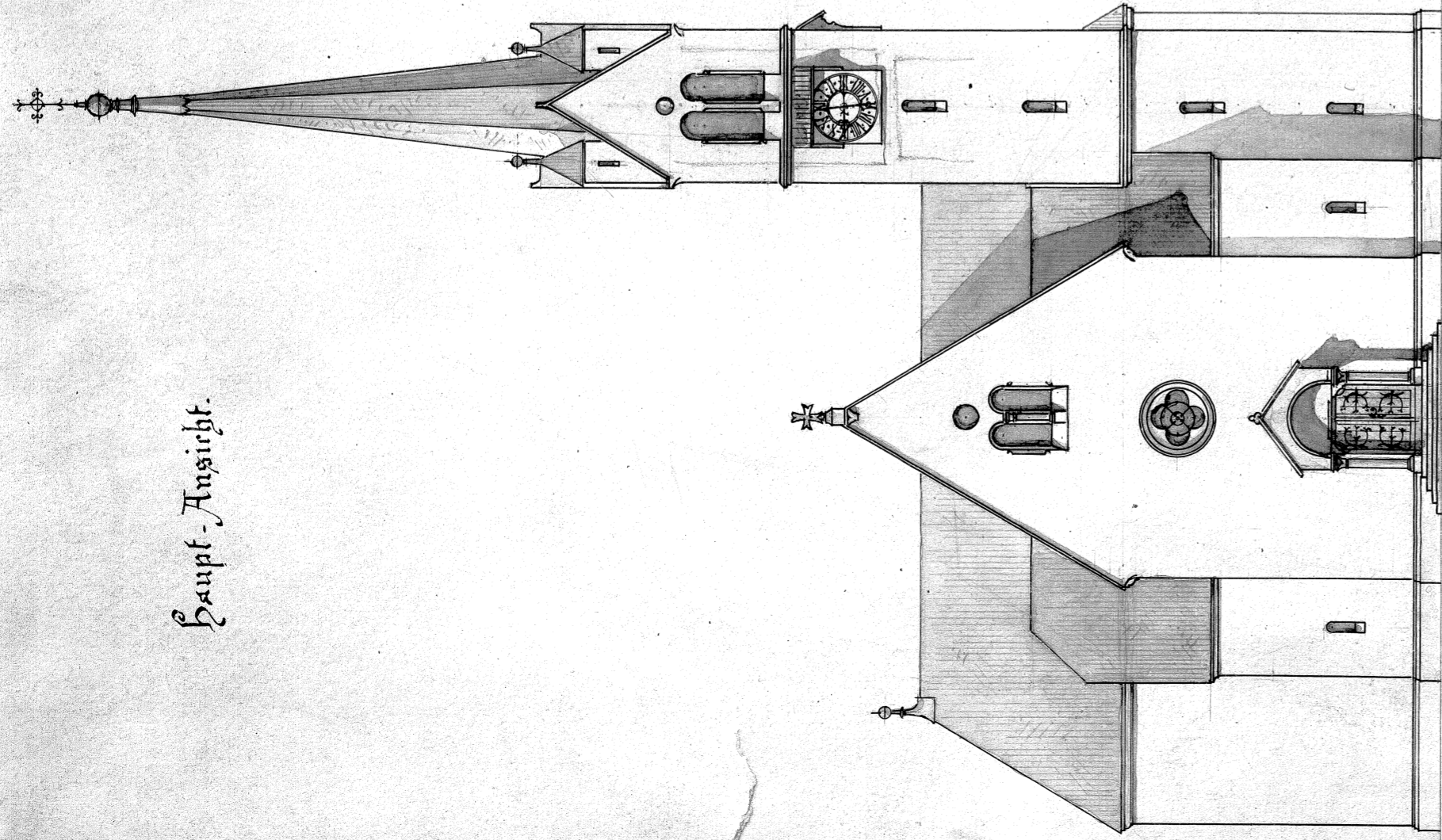


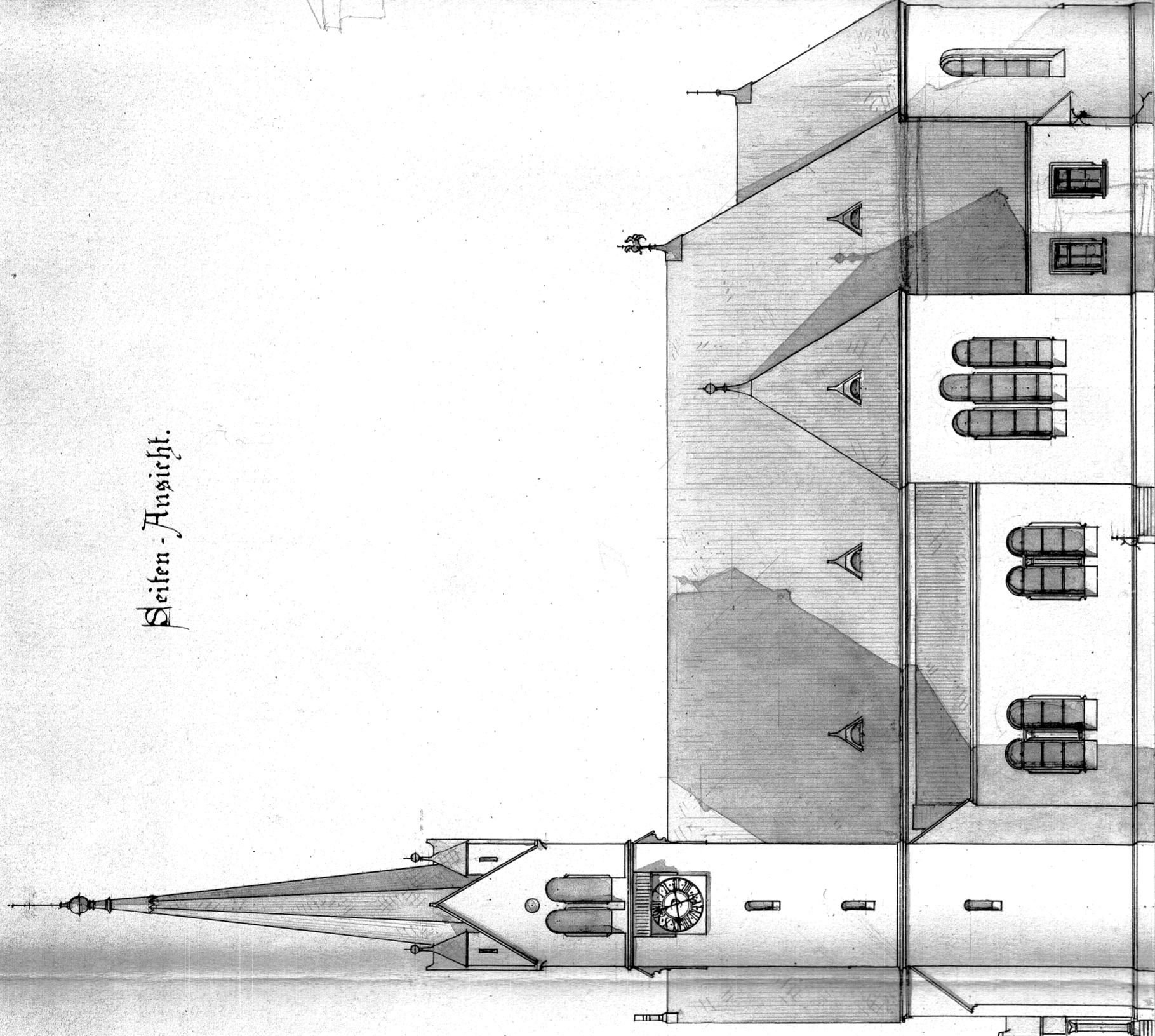
A

Plan der neu zu erbauenden Kirche in Ober-Stupung.

Haupt-Ansicht.

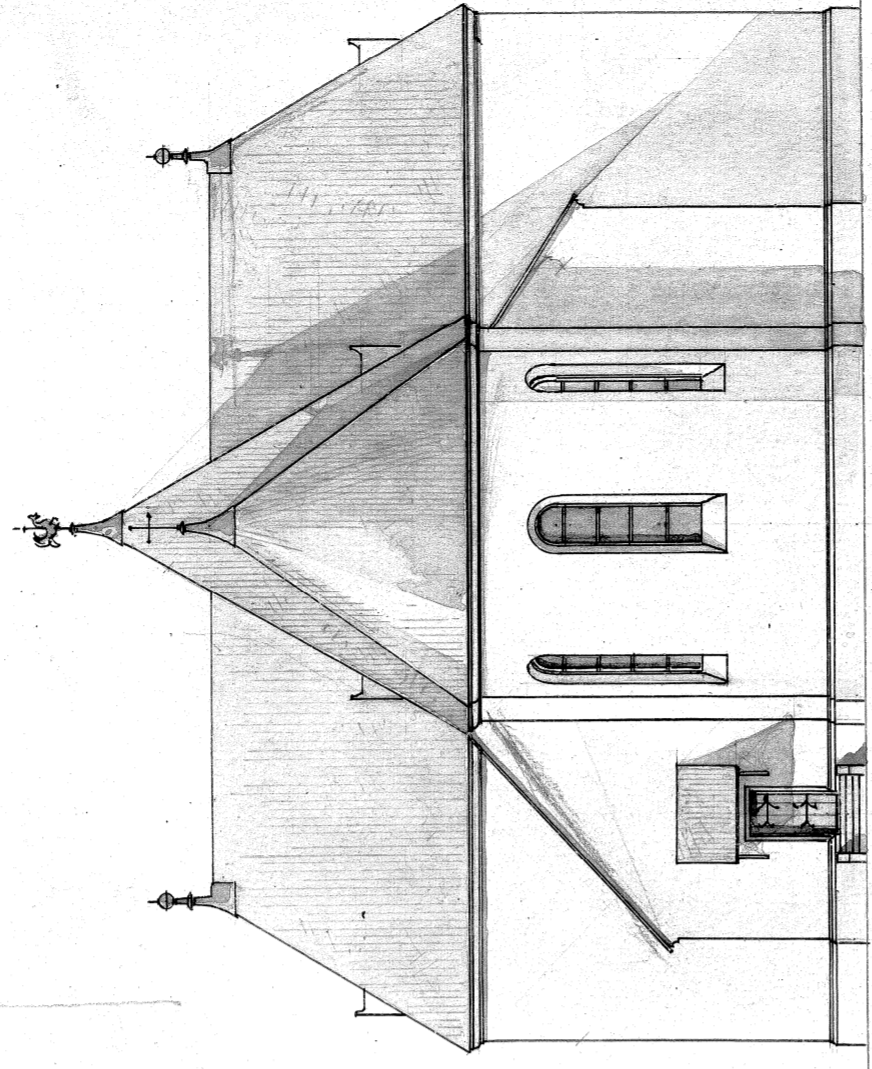


Seiten-Ansicht.

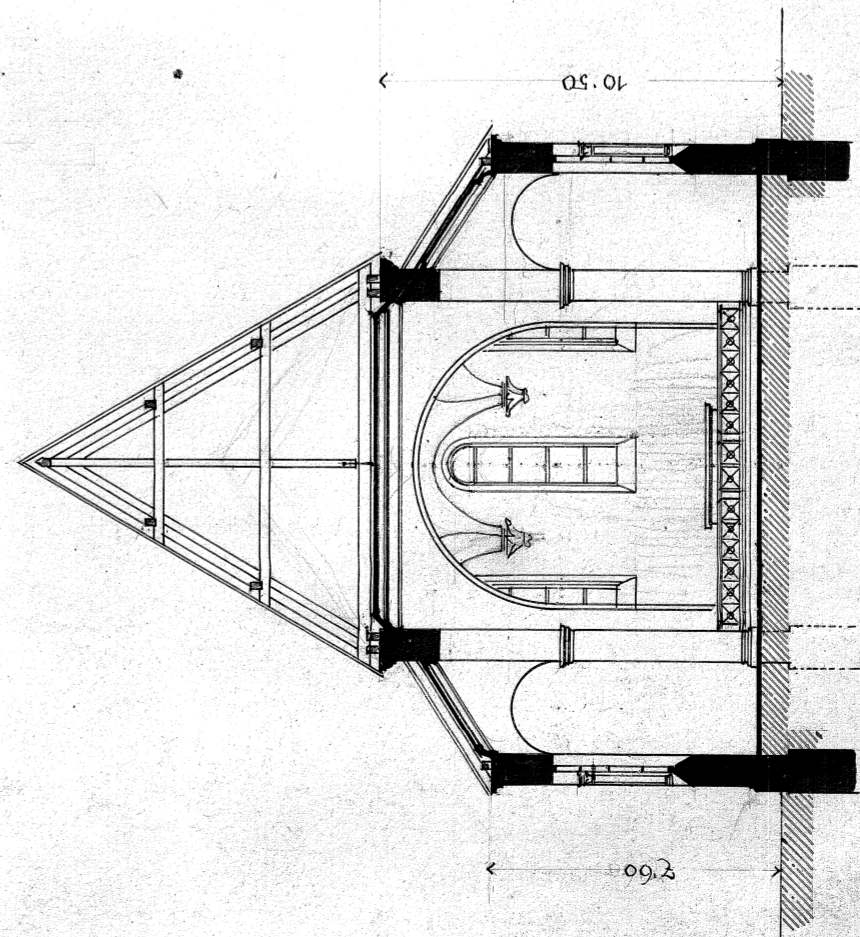


Chor-Ansicht.

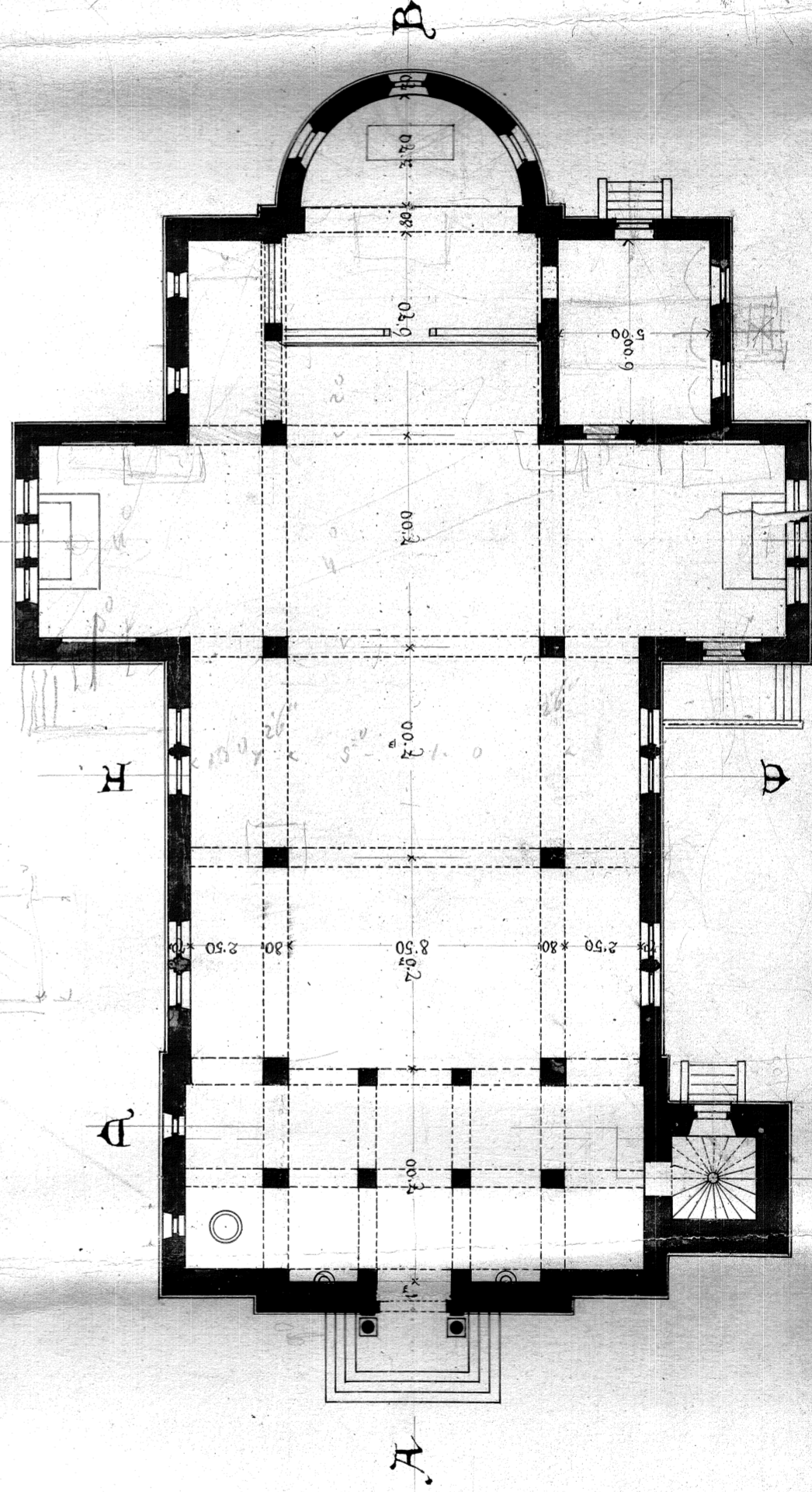
*Handwritten notes:*  
No. 14  
Schwand  
Toppf. 100°



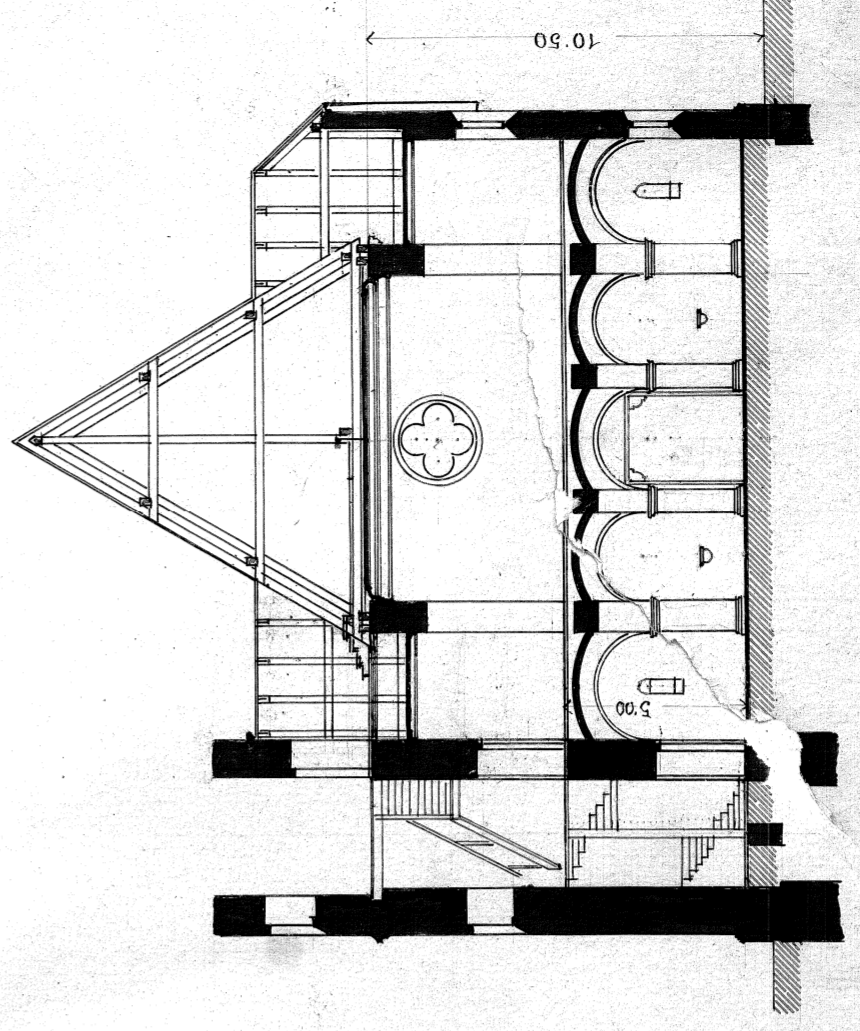
Querschnitt. 6R.



Grundriß.



Querschnitt. 6P.



Zug. Statist. Zahl: 265 v. 1876  
Wien am 2. März 1877.

*Handwritten signature:*  
Karl Joh. Böhm  
Arch. d. O.

